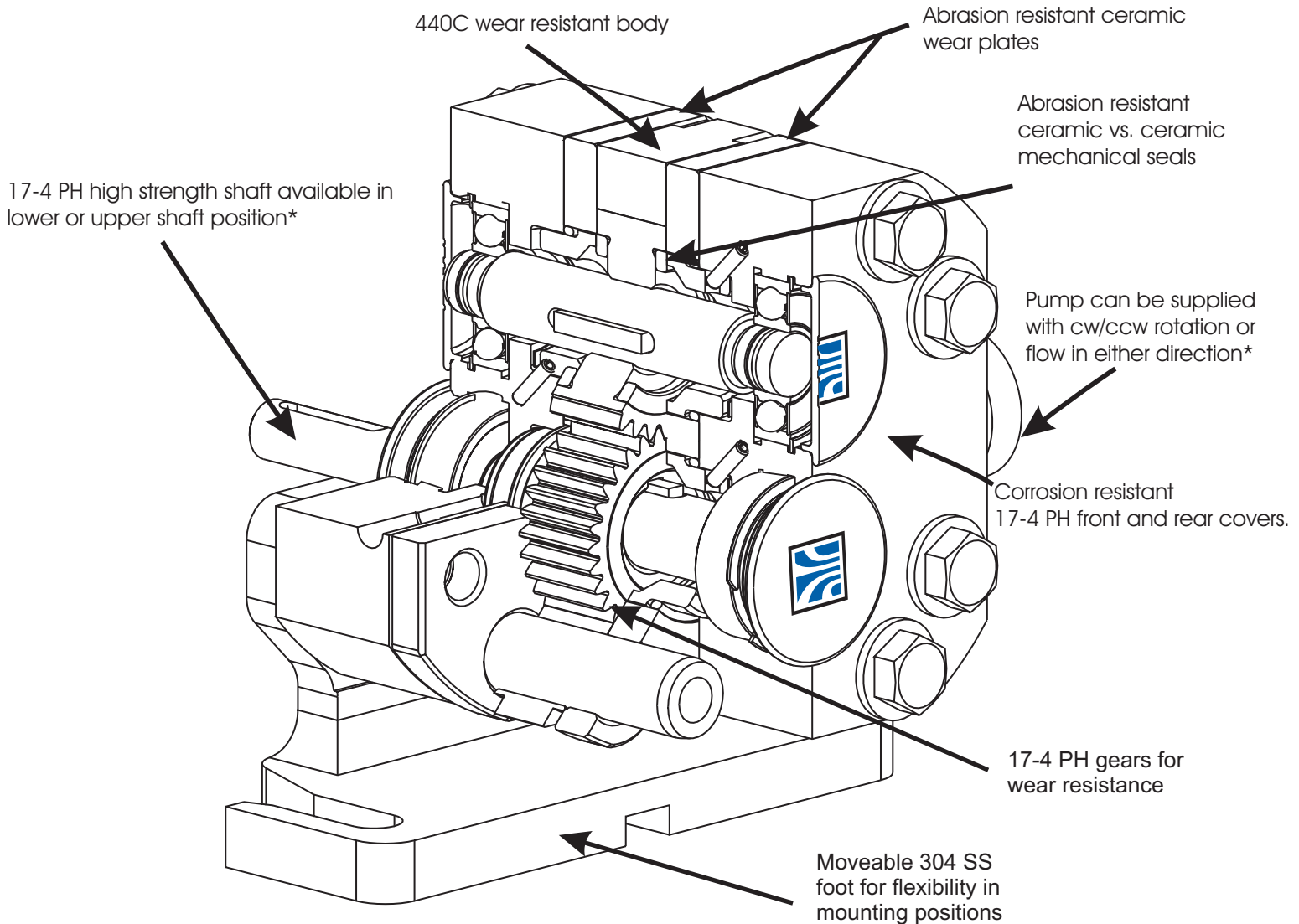


Universal Gear *Metering Pump*



*Shaft position, rotation, and flow direction can be changed in field.

Features

- Cleans fast - up to 600 RPM - for quick product changes.
- Pump flushes quickly with minimal product loss; mechanical seals incorporated into the gear faces reduce total product volume in the pump.
- Standard and hot clearance rotors available.
- Ceramic seals and Kalrez O-rings stand up to tough solvents and other harsh chemical applications. EPDM or Viton O-rings optional.
- Ceramic wear plates - eliminate cover wear and extend gear life.
- Pressure capability - up to 200 psi/13.8 bar.

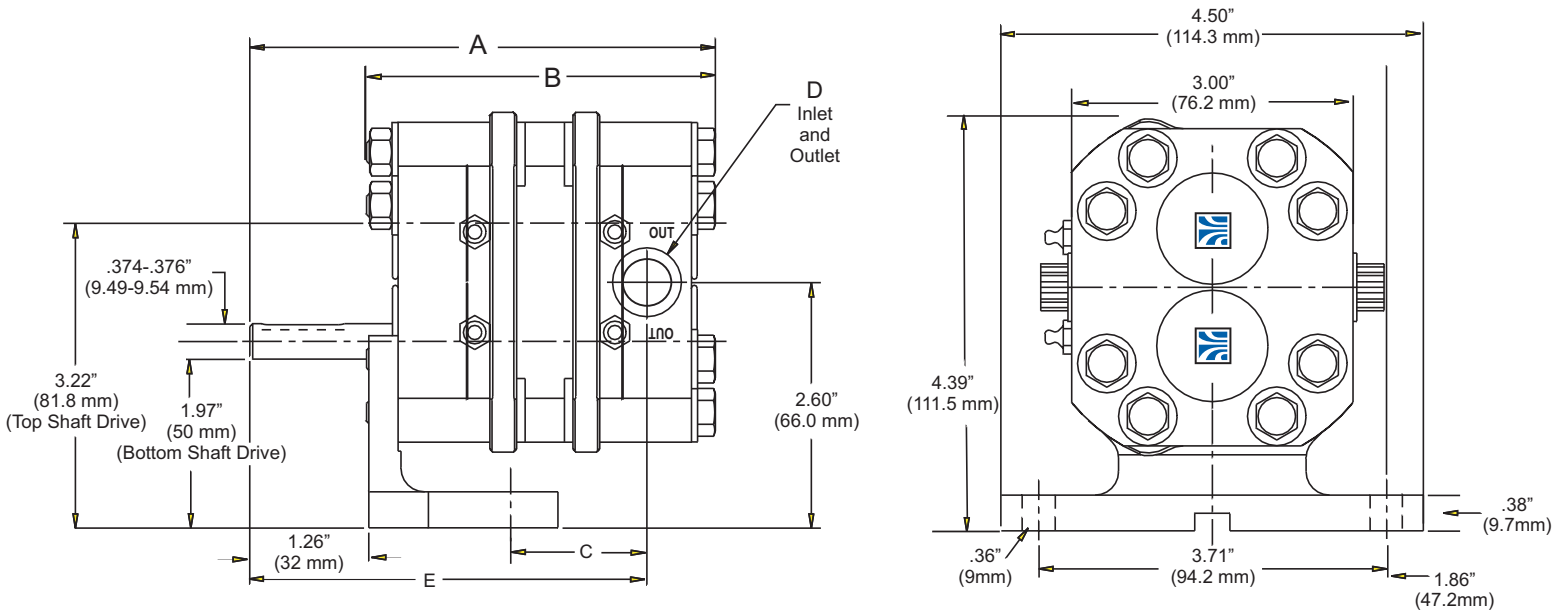
**ISO 9001
CERTIFIED**

Patent Pending



**Waukesha
Cherry-Burrell**

DIMENSIONS



| Model | A | | B | | C | | D J1453 SAE UN THREAD | E | | F KEYWAY | |
|-------|-----|-----|-----|----|------|------|-----------------------------|-----|-------|-------------|-------------|
| | IN | MM | IN | MM | IN | MM | | IN | MM | IN | MM |
| 3UG | 4.9 | 125 | 3.7 | 94 | 1.44 | 36.6 | 11/16-16 | 4.2 | 106.7 | 1/8 X 7/8 | 3.18 X 22.2 |

| Model | Displacement Per Revolution | Nominal Capacity To | Inlet / Outlet J1453 SAE | Optional 316SS Inlet / Outlet S - Line Port | Pressure Range | Maximum RPM | Temp Range |
|-------|-----------------------------------|---------------------------|--------------------------------|---|--------------------|----------------|-----------------|
| 3UG | 3.15 cc | 1800 cc / min | 11/16 -16 | 1/2" | 200 PSI (13.8 bar) | 600 | to 180 F (82 C) |



**Waukesha
Cherry-Burrell**

®

**ISO 9001
CERTIFIED**

Waukesha Cherry-Burrell
611 Sugar Creek Road
Delavan, WI 53115 USA
Tel: 1.800.252.5200 or 262.728.1900
Fax: 1.800.252.5012 or 262.728.4904
E-mail: custserv@gowcb.com
Web site: <http://www.gowcb.com>

*For additional information please contact your
local Waukesha Cherry-Burrell distributor.*

FF-1102
WCB-FAX-11/00
Printed in U.S.A.
Effective 11/00